

ARTIST RESIDENCY

B K N
BJÖRKÖ KONSTNOD



WHERE THE FOREST MEETS THE SEA

Content:
LOCATIOON
METHODOLOGY
OPEN CALL WAP 24
HOST ORGANIZATION
PREVIOUS PROJECTS
MENTORS

You reach BKN by public transportation (buss) from Stockholm via Norrtälje. The two former school buildings are right at the bus stop so its really easy. Be vigilant there are many Björkö (Birch Island) in Sweden we are the one in the municipality of Norrtälje. The space is endorsed by the locals and run by the non profit organization Björkö Konstnod. BKN is in two buildings and total area of 590 sqm. During the winter months there are just over 300 people censused out here and in the extended July we reach over 4000 people in addition to day tourists. The small cosy and friendly costal community is remote in an area where the boreal forest meets the sea. Björkö is the last island in a set of keys stretching north south along the mainland. Today a bridge connects us with the main land. Out here we have little sound and light pollution.

The forest help regulate climate through the exchange of energy and water. They are also a large reservoir of biogenic carbon. It is typically comprised of coniferous species such as pine, spruce and fir with some broadleaf species such as poplar and birch.

Björkö has lakes and creeks in addition to the surrounding Åland Sea. It is a waterway in the southern Gulf of Bothnia, between Åland and Sweden. It connects the Bothnian Sea with the Baltic Sea proper. The western part of the basin is in Swedish territorial waters while the eastern part is in Finnish territorial water.

Historically its was a ship fleet and ship building community stretching back to the Viking days. It was an important point for crossroad shipping north-south and east-west prior to the steam engine. Then instead the urban population went for summer retreats. Between 1907 and about 1020 the granit quarry was an important center. Today some small business exists in addition to several not for profits working with revitalizing the area. Among them a community initiative of affordable living with in the concept of New European Bauhaus. With in walking distance we have the forest, the ocean, a small space for theatre and cinema, a cultural heritage organization, a community seafarer museum and a lutheran church. The last years a yoga and cross-fit retreat was established and in Simpnäs harbor one cafe and one Thai restaurant. In addition the area has summer camps for 1000 of children during the summer months as well as a campground (naturalist) and off course BKN with residency and public engagement.

Address:
Björkö Konstnod, Simpnäsvägen 739
764 53 Björkö, Sweden

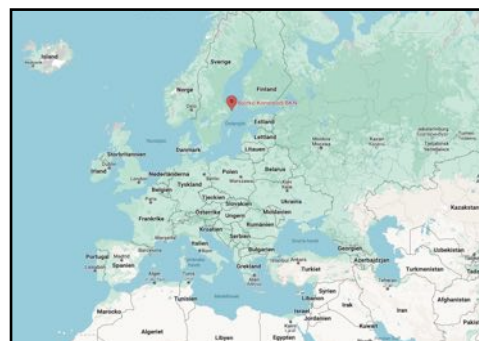
Digital address/Plus Code:
V26Q+R3 Skeninge

Map: <https://shorturl.at/ghxz7>

Public Transportation:
Metro redline/Bus 676, Bus 636 - the trip fro central station
Stockholm takes about 2 1/2 hours.

Bus stop: Björkö-Arholma Skola (Björkö-Arholma School) is the name of the bus stop. It is right on the doorstep of BKN. (sl.se, Stockholm-Norrtälje bus 676, Norrtälje-Björkö 636)

bjorkokonstnod.se/bkn



BKN is a process-based residency, where we delve into each others' knowledges and things we encounter together embedded in the local resources. Interventions weave across different registers of time and site. The focus is on how walking is interlocked in our practices. Fieldworks and seminars are jointly done to locate and entangle structures, narratives and forces. We believe in a safe and friendly attitude as part of the art scene we share.

BKN fosters a peer-based environment: "thinking together, learning together" - a resource and semi public forum to explore and experiment. Jointly, we form a transformative, dynamic space for art that engages with life and nature towards critical and poetic explorations, influenced by the immediate surroundings; the forest, lakes, sea and people living in the rural area.

Program dissemination will be in an online format and a series of open studios/walks as engagement with the local community. At arrival you will get an introductory walk to familiar yourself with the area, public right of access, flora and fauna as well as the landscape and initiatives as well as organizations on Björkö. We always to a meet and greet over dinner and we facilitate share sessions to learn from each other in addition to the informal learning. Prior to arrival you will get a welcome kit with details info on practical things how to buy food, do laundry etc and introduce the NAB compass is here a useful tool to move in the three fields and through the steps with in each field through out the residency.

Keywords: walking, asymmetry, entanglement, beyond violence, not-knowing, desire, nature, responsibility, deep listening, close seeing, territory, contested sites

The main objective of BKN is to provide an opportunity to, within the stay, focus on, the artistic practice and experience life in the Northern Archipelago of Stockholm - where the sea meets the forest, fields, and lakes - a peaceful rural milieu. Proposed project should relate to site sensitive exploration, argue why the residency site is of interest or entail working with strands of various communities. Established in 2020, AiR BKN supports artists of diverse ages, backgrounds, and disciplines in the exploration and expansion of their creative practices and the production of new bodies of work. The program aims to foster the development of each artist's voice, providing an environment that actively supports experimenting, taking risks, and pursuing new ideas. Providing the critical components of time, space, and community, the Program encourages significant creative, intellectual, and professional growth.

During 2020-2023 we have offered more than 140 studio grants in addition we are constantly working towards finding complementary grants. We have had collaborations on directed residences with support from Swedish Arts Grant Committee, Region Stockholm and SWAN. Some artists have come on grants that they arranged themselves. Since 2022 we are also part of Nordic Analog Network. Our mission is to provide affordable project studios and at the same time create a vivid community on the island and amongst our visitors and artists.

BKN is artists run with a board of artists, cultural professionals and locals. Since the opening of BKN in 2020 a curator has a part time engagement and a fellowship studio at BKN. We rely on membership fees, donations and grants for operational costs.

Professionalism

BKN is committed to continuous professional development and enhancement of knowledge and skills. We listen to each other and are responsive to artists' needs and changes in the field.

Diversity

BKN actively work towards a diverse definition of the arts and welcome artists complying with a safe and inclusive work atmosphere.

Transparency

We believe in the value of clear, accurate and proactive communication.

Sustainability

We strive to improve the resources available and to map out a ways of limiting or ecological foot print.



BJÖRKÖ KONSTNOD/BKN was founded in 2020, since then we have had more artists every year that come on a grant or up on invitation received a grant from third party. Culture and arts not only in Sweden are currently undergoing a challenging time. We are happy to announce that we have an annual grant from Region Stockholm to cover some of our costs. All projects run on project specific budgets in some cases we partner up and can provide a grant towards studio, accommodation, material and travel-costs.

Supporting grants have come from: Swedish Arts Council, Norrtälje Municipality and originally we were founded for the pilot (2020-23) with support from a county side development grant from EU and Leader. We have made collaborations in projects with; Swedish Arts Grants Committee/IASPIS, SWAN, Nordic Analogue Network.

BKN is artist run and is a not for profit registered in Sweden. The board consists of A & AC as well as local people. All board members work on a voluntary bases. A curator is commissioned one day a week for artistic profile and strategy for the residency. The curator also takes the lead in exhibitions, open studios, presentation and residency programs. In addition the curator has a fellowship studio at BKN and is present for informal mentoring and curatorial sessions. The curator is also the lead and main contact for collaborations of special programs among them Swedish Artists Residency Network and Nordic Analogue Network and for bi annual representation at Supermarket Art Fair in Stockholm, visits and collaborations with Norrtälje Kunsthalle etc. BKN has formed a group with representatives from the other not for profits on Björkö for coordination of projects and collaborations (projects, use of each others spaces etc).

The residency artists at BKN are national and international the language spoken during residency is predominantly English.

The association is open to anyone to support the organisation by becoming member. All visiting artist should become member for 100sek annually and provide a 500 sek development fee.

Each artist is provided a private studio with accommodation. The two smaller studios also gets a share in the workshop/presentation space or wood workshop if possible and needed. Three shared spaces available in addition to two analogue darkrooms. The residency goal assessment is walked through at the selection video call. Up on arrival the artists get a welcome kit a walk through of house safety issues, an introductory walk with relevant information on the area, its people history, nature and ecological aspects of the area of this and a meet and greet over dinner. The curated programs core is the share sessions in addition to curatorial mentorship and opportunity for public out reach (open studio or presentation) or other type of dissemination. For resources at BKN read more about them on bjorkokostnod.se/bkn.

The host organization through the curator is responsible for the welcoming and the departure procedures. Including a two way feedback session.



WALKING AS PRACTICE

proximity through artistic expressions in the field of walking practices

The walking scene in Sweden is in the forming. The purpose with this process-based program is to invite international artists to further this development together with a core-group connected to Björkö Konstnod/BKN. WAP methodology of fieldworks and share sessions are carried out to locate and entangle structures, narratives and forces via the intersection of the arts and walking.

The configuration of a transformative, dynamic space for art engaging with life and nature towards critical and poetic explorations, influenced by the immediate surroundings where the forest meets the sea, way-finding at BKN in The Northern Stockholm Archipelago, Sweden.

The curatorial framework opens up for participating artists to influence the direction and leaned towards new materialism, ie rethinking dualisms through a non-hierarchal approach. Reviewing the development (share sessions, walks, and work made available to public), "Spaces of Anticipation" is the theme for WAP24. We also foresee that after WAP24 the platform could continue to focus on aspects of artistic research at the cusp of walking and the arts.

The call is open for professional artists who wants work both individually and in new constellations with other resident artists.

The call opens spring of 2024 for the residency period of May 6 to June 30. Current grant application pending from Culture Moves Europe. If successful application artist will get a fee (#5 Euro/day) and a set compensation for travel costs.

WAP24 will be mentored by BERG DUO and one additional artist with long experience in art as walking practice. BKN will provide studio and accommodation.

Further info at bjorkokonstnod.se/bkn

As a WAP artist you will be come part of our network. Get to know the artists from 2023 via RC

<https://shorturl.at/nxzA1>

Examples residency programs

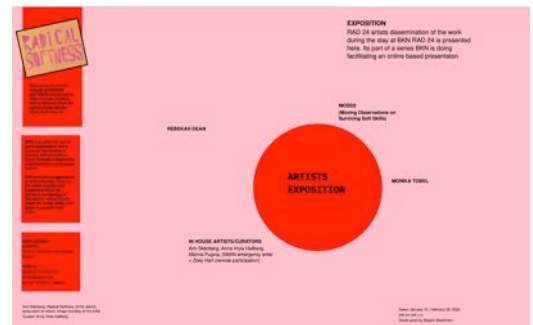
RAD 24, jan-feb 2024

<https://bjorkokonstnod.se/rad24artists>

<https://shorturl.at/pwyX0> (research catalogue RAD24)

The concept of radical softness (RAD) is worked up on from the vantage point of being embedded in nature.

Artists: 8



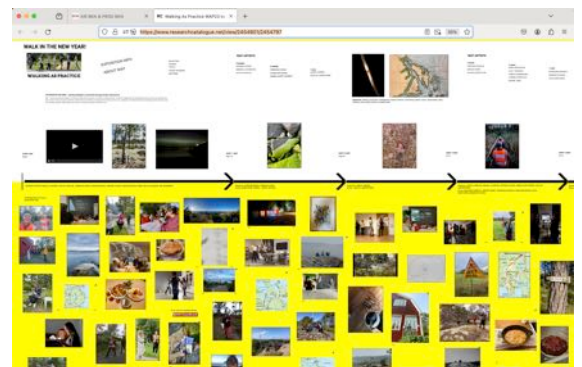
WAP 23 - september to October, 2023

<https://bjorkokonstnod.se/wap23artists>

<https://shorturl.at/hmHP7> (research catalogue WAP23)

Nr Artist: 25+guest co-walkers

The program is set where the forest meets the sea. Walking as practice is something that has been embedded in our program since the start. The WAP 23 explores walking as practice for artists. The 2023 iteration focused on attentive walking. A number of presentations, walks, share sessions in addition to exposition at RC.



MAGNITUDE, September 2022

<https://bjorkokonstnod.se/magnitudedeartists>

<https://bjorkokonstnod.se/magnitudelunch> (also pdf folder)

Nr artist: 5

Collaborate partner/grants: 4 IASPIS, 1 Region Stockholm

Grant studio: LEADER EU country side development fund

MAGNITUDE was a process based residency, where we delved into each others knowledges and things we encounter on the island. We believe in a safe and friendly attitude is part of the art scene we share. Interventions weaves across different registers of time - site and draws from fieldwork on the island and embodied relations with nature. Fieldworks and seminars were jointly done to locate and entangle structures, narrative and forces. Towards forming an experience to continue to build individual projects up on.



NAN, 2023/22

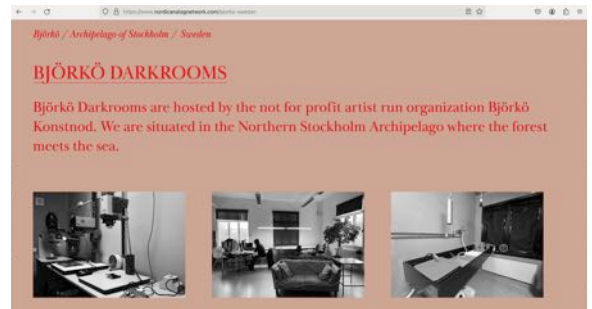
<https://bjorkokonstnod.se/nan23>

<https://bjorkokonstnod.se/nan24> (publish Feb 2024)

Nr artists: 3

Collaborate partner: Nordic Analogue Network on funding from Nordic Culture Point

The network was started as an exchange program between different darkroom hosts. 2023 two artist per host and for 2024 one artist.



BKN RESPONSE/SWAN EMERGENCY 2020-24

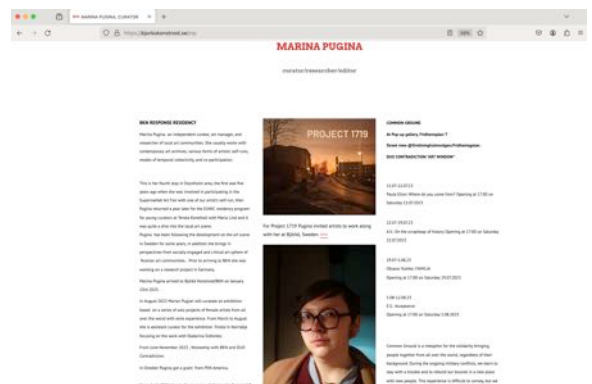
<https://bjorkokonstnod.se/response>

Nr artist: 9

Collaborate partner: 1 IASPIS, 3 SWAN, 1 Pen America, others had studio grant from BKN in addition to crowd funding

Exempel artist page: <https://bjorkokonstnod.se/mp>

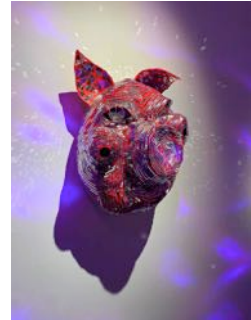
BKN was the first institution in Sweden responding to the need of a safe haven due to the Russian invasion of Ukraine.



Example exhibitions

BOOGIELAND, Supermarket 2024 (April 2024)

The exhibition at Supermarket Art Fair 2024 is curated by Anna Viola Hallberg and is built on works by a number of artists who have been with BKN since last time we participated in Supermarket Art Fair 2022. The curatorial theme draws from Radical Softness. The title is derived from an Earth Wind and Fire song Boogie Wonder Land in combination with the concept of Boogiemans - BOOGIELAND.



TRICKLE/RÄNNIL, Art In The River Norrtälje 2023

<https://shorturl.at/qET03>

Art in the river 2023 has the theme Rännil, which originates in a quote from the philosopher and writer Hanna Arendt. Seven artists exhibited eleven works together. 2023's theme, Rännil, was based on a quote from philosopher Hanna Arendt's essay collection Men in Dark Times, where the author believes that political issues are too important to be left to politicians alone. With this, she indirectly invites us all to consider and act responsibly. The curator of the exhibition in 2023 was Anna Viola Hallberg from Björkö konstnod.

Nr artists: 7 (from BKN)

Commissioned by Norrtälje Kunsthall/municipality



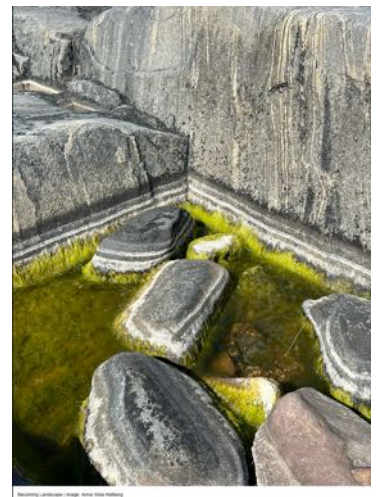
BECOMING LANDSCAPE, Raum fur Kunst, Bonn, Germany, 2023

<https://dasesszimmer.com/en/exhibition/becoming-landscape>

Solo exhibition by Anna Viola Hallberg inviting artworks by 4 other artists from BKN to converse with her works.

We elaborated up on a new reference system based on care strategies, unfolding ways to share as a strong and generous act and through this act establishing a fabric – a landscape – that we all become part of. The selected works for the solo show at DAS ESSZIMMER – space for art+ emerge at a meta level what could be perceived as gateways or thresholds between or with-in systems. The discourse, hence occasional specific geopolitical mentioning, lingers on and initiates a process where re-storying takes place and opens up for shared and reflective space and how possibly the in-between stories bring forward agency as the re/de/un do vulnerabilities and introduces a discussion on desire of being connected and how to orchestrate resistance and question what value systems we feed into. Art thus becomes a site for elasticity, for critical dialogues, for doubt, for attempts for re-establishing a sense of direction or rhythm to un/de/re disengage.

Nr Artists: 5 (BKN)



THE SEA THAT SURROUNDS US/HAVET SOM OMGER OSS

Focused on the relationship between man and the sea, on responsible actions and perspectives. The exhibitions have aimed to create meeting places and engagement around locally important issues through art. The exhibitions/workshops etc. have taken place outdoors in or in close proximity to the respective community center in the archipelago in collaboration with the local Community Center Association as host, but preferably also in collaboration with several associations. Together, artistic processes and site-specific works were created. An association hosted an artist, a work and an artistic process and based on the dialogue created a local anchoring. The artworks functioned as meeting places where people meet and new ideas and commitment are born. Already produced works were also exhibited, e.g. a from residency at Björkö Konstnod. The project contributed to strengthening cohesion and draws attention to the areas in which the associations are active.

(Bygdegårdarna, web + book)

Artist example page: https://bygdegardarna.se/stockholm/wp-content/uploads/sites/13/2022/06/Zoey_Hart109690.pdf Example artist presentation video



Example video artist presentation

Bilayana Furnadzhieva, (gb/fr): <https://bjorkokonstnod.se/bilyanafurnadzhieva>



Artists

Aurike Quintelier (be), video + community performative walk

Beatrice Alvestad Lopez (sweden/norway), video

Oona Hyland (ireland) , video/graphic art

Bilyana Furnadzhieva (bg/fr) drawing/collage

Annelie Wallin (se), video/work on paper/installation

Alevtina Kakhidze (ua), drawings

Zoey Hart (us) sculpture/lab/video/performance

Lisa & Hugo Gordilo (us/gu), sculptures, paintings

Maria Eriksson (ee) - fine graphic art

Monika Tobel (hu/uk)

Mark Rautenbach (sa) - installation drawing

Katarzyna Łukasiewicz (pl) - photography

Beili Liu (us) - installation

Christof Mugge (se/de) - installation graphic art

Rebekah Dean (uk) - performance

Since the start BKN has had about 150 resident artists.

bjorkokonstnod.se/2020

bjorkokonstnod.se/2021

bjorkokonstnod.se/2022

bjorkokonstnod.se/2023

bjorkokonstnod.se/2024

Mentors at BKN Residency Program

HALLBERG + SKÅNBERG = BERG DUO

The Swedish artists Ami Skenberg & Anna Viola Hallberg have collaborated since 2022. They have made workshops, interventions, collective performances and turned them into video projects. They share studio at BKN.
Bjorkokonstnod.se/bergbio

AMI SKÅNBERG - BKN SR PEDAGOGUE, CO-CURATING PROGRAMS

Dr. Ami Skånbergs is the Head of M.A.D.E – Master Dance Education at the Stockholm University of the Arts, and also works at the University of Gothenburg. She has held keynotes at NoFoD, Latvian Academy of Music and Dance, University of Philippines, Royal College of Art (UK) and University of Bologna.

Ami has co-chaired the Nordic Summer University Study Circle of Artistic Research with Dr Lucy Lyons. She is a member of the Peer Review board of Journal of Artistic Research. Ami often creates stage work (solo, and collaborative) based on her embodied life story in a particular theme. Ami makes dance films and documentaries about dance. Her debut film won an honorary mention at VidéoDanseGrandPrix in Paris 1995. She walks slowly as a ceremonial, subversive act thanks to her studies with Nishikawa Senrei and work with Japanese dance in Kyoto since 2000. Her research interests are practice-led and concern gender codified movement practice, non-hierarchical processing of global dance techniques, and auto-ethnographic accounts from within the practice.

ANNA VIOLA HALLBERG, BKN CURATOR

Anna Viola Hallberg's work - as an artist and curator - interacts with specific communities, while addressing social or political contingencies and by this, taking on a critical stance towards public space/sphere and in the process relating to existential matters for the individuals as well as through society.

Hallberg's artistic practice is informed by the notion of in-betweenness, as personal experience and geopolitical position. Her methodology in the immersive space-narrations of video, sound, photography, and text brings forward a discussion on the documentary of experience, remembrance, and emotions rendering collective memory/affect and the work for social justice. Hallberg's practice, based on dialogical aesthetics, explores the relationships between embodiment/experience and audiovisuality, spatiality and time, through discursive and immersive video-based installations. She works with subordinate thematics from a documentary point of departure focusing on experiences and emotions. At times connecting the material with archival discoveries.

The curatorial work spans from video-based exhibitions to initiatives, focusing on counter publics and art beyond the urban, working with select source communities and their agency often upon strategic and curatorial development of publicly funded art, primarily in the field of: participatory, engaged, and critical practices. For Hallberg engagement in seminars, workshops, presentations and walking are an integral part of her practice. Hallberg is The BKN Fellow (artist/curator) at Björkö Konstnod in the northern archipelago of Stockholm. Previously she was the curator and co-founder of AiRS, Socially Engaged Art Residency at Skovde Art Museum, Sweden and commissioned curator of "Distancio" for Region Jönköping, Sweden, "Trickle" for Norrtälje Kunsthalle. She was the initiator and curator for "The Sea That Surrounds us" in 10 coastal communities in Stockholm Archipelago. She held a number of keynotes and workshops in Sweden and internationally. Hallberg has an Msc in International Museum Studies from Gothenburg University.

annaviolahallberg.com

CV: <https://files.builder.nu/cc/bc/ccbcf753-57bc-451f-8d85-f499af416326.pdf>

bjorkkonstnod.se/curator



JOHN SCHUERMAN, invited co-mentor WAP24

John Schuermans works with drawing, video, performance and sound often intertwined with walking. His work as an artist, educator and curator led to a unique artist book on walking during covid. Nature and human nature are visible in both his work which consists of exhibitions focused on sociological themes. His aesthetic style and social consciousness formed as he grew up on a dairy farm in southern Wisconsin, coming of age during the cultural revolution of the late 60's and early 70's. He has produced exhibits and works on topics such as Money, Gender Perspectives, Identity, Environmentalism, Our Medicated Lives, and Human Overpopulation.

"As an artist I try to remain aware of both my humanity and my animal dependency on the rest of nature. I'm fascinated by both. The forms and patterns of nonhuman nature are so intricate, chaotic, and iterative and yet without exact repetition. Even as I feel at home with them around me. The forms and patterns of human expression are easy to see by contrast. Ideas and concepts such as language, models, mathematics, abstraction (abstracting something is a very human thing to do) and human mark-making are all easily distinguished from the rest of nature's patterns." JS

ZOEY HART - BKN educational/care/disability expert

Zoey Hart is an interdisciplinary artist and cultural educator based in Brooklyn, and the former director of the Art and Disability Residency Program at Art Beyond Sight.

Driven by the friction between invisible disability and modern medicine, Hart's multimedia practice re-centers the notion of what constitutes wellbeing in changing social and environmental contexts. Blending new media tools and interdisciplinary technologies with traditional image-making, performance and social practice, Hart's work aims to provide accessible opportunities for reframing what it means to be well within the spaces we hold and inhabit.

Hart received her MA in interdisciplinary studies from NYU Gallatin (2015). In 2021 Hart worked with Culture Push as a resident artist with Works on Water's Tending The Edge. She has been granted awards and studio fellowships from The Studios at Mass MoCA- Assets for Artists (2017) and NYC Department of Cultural Affairs (2021).

Hart has exhibited with The 8th Floor Gallery, The Old Stone House of Brooklyn, and Flux Factory in NYC, and as an international artist in residence at Soulangh Cultural Park, Taiwan as well as with art centers in Finland, Sweden, and The UK. Her work has been published in Hyperallergic, and her writing contributed to creative and scholarly projects across the Disability Arts community. She has designed and led programs, workshops and residencies with The Museum of Art and Design, Civic Art Lab, More Art and various international arts residencies to create accessible engagement workshops and collaborations on art, accessibility, mindfulness and wellbeing.