

# REVERSE OSMOSIS SYSTEM ECOSOFT MO30000

## APPLICATIONS:

Steam boilers, heating and cooling circuits, breweries and beverage production, livestock and poultry farms, glazing factories, laundry and car wash, greenhouses etc.

## EQUIPMENT:

- Grundfos® CR 3-15 pump
- 300 psi membrane housings
- Electrical panel with Ecosoft controller
- Danfoss solenoid valves
- Piping, instrumentation
- Steel frame
- Wooden crate

## KEY FEATURES:

- Saves of space, in 2,65 times\*
  - Saves up to 43% of energy\*
  - Original design
  - Easy to use thanks to smart architecture
  - Ecosoft controller OC5000
  - Grundfos worldwide guaranty
  - CE marked and confirmed to be safe in accordance with EC New Approach Directives
- \*Compared to MO36000

## OPTIONS:

- Filmtec™ XLE-4040 / LCLE-4040 or Ecosoft ELP-4040 membrane

## PHYSICAL PARAMETERS:

Influent water	G 3/4"	
Concentrate	G 1/2"	
Permeate	G 1"	
Approx. weight (bare system / crate)	95 kg	100 kg
Dimensions (bare system, W × D × H)	0.495 × 0.395 × 1.48 m	
Dimensions (crate, W × D × H)	0.5 × 0.4 × 1.5 m	



*Ecosoft reserves the right to amend the product's system architecture provided that its functionality and usability will not deteriorate*

## ECOSOFT MO30000 4" REVERSE OSMOSIS SYSTEM

Code	Product	Flow rate, L/h (GPH)	Membranes**	Pieces on pallet
MO30000TP5	Ecosoft MO30000 RO System	1400–1600 (350–420)	6/40 x 40	6

\* List prices are without VAT

\*\* Membranes are not included in the package

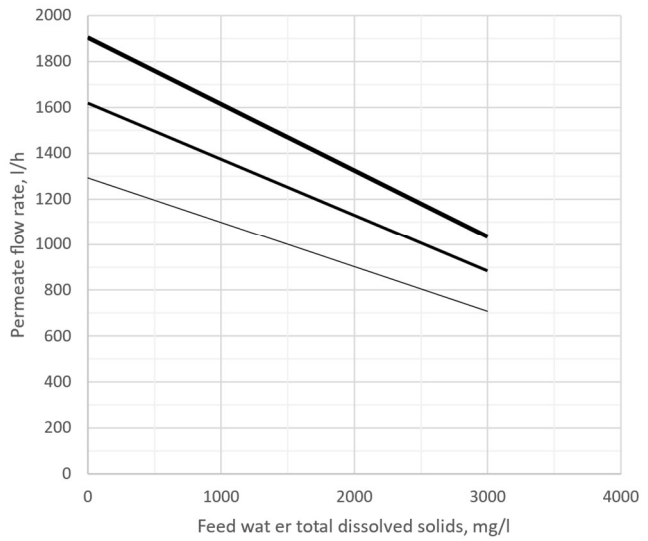
## TECHNICAL SPECIFICATION

Permeate capacity <sup>1</sup>	1500 L/h
Permeate recovery <sup>2</sup>	75%
Maximum TDS	3000 mg/L
Influent flow demand	2000-2500 L/h
Operating pressure	8...12 bar
Maximum pressure	14 bar
Electrical requirements	230 V, 50 Hz (1 ph)
Electrical power	1,4 kW

<sup>1</sup> depends on feed water TDS, temperature, and permeate recovery — see graph on the right

<sup>2</sup> or low scaling/fouling water

ECOSOFT MO3 0000 FLOW CAPACITY  
(WITH XLE-4040 MEMBRANES)

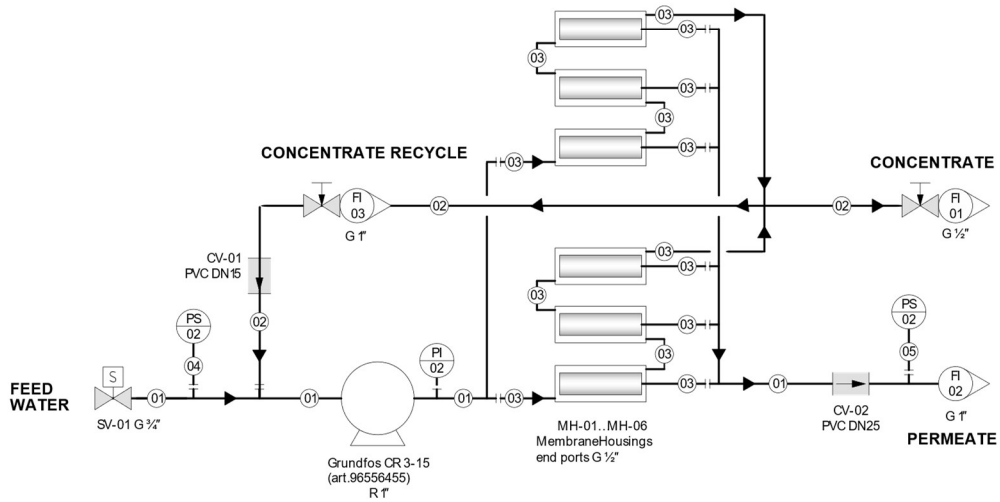


Permeate flow rates are calculated under the following conditions:

- 2 bar influent water pressure
- 0 bar backpressure in the permeate line
- fresh membranes
- XLE-4040 membranes

## PIPES AND INSTRUMENTS DIAGRAM

Ecosoft MO30000TP5  
Reverse Osmosis System  
Piping and Instrumentation Diagram



### PIPES AND CONNECTIONS

—01—	PVC pipe	Ø 32 mm O.D.	<b>G</b>	parallel BSPT thread
—02—	PVC pipe	Ø 20 mm O.D.	<b>PVC</b>	polyvinylchloride (solvent weld)
—03—	PE hose	Ø ½"		
—04—	PE hose	Ø ¼"		

### VALVES

	Solenoid Valve
	Needle Valve
	Check Valve

### INSTRUMENTS

	Pressure gauge (panel mount)
	Pressure switch (panel mount)
	Rotameter